

LBC-HDBT-R-DG

LINK BRIDGE™ HDBASET
HDMI RECEIVER W/POH



BCI reserves the right to make changes to the products described herein without prior notice or consent. No liability is assumed as a result of their use or application. All rights reserved.

©2013 Broadata Communications, Inc.



SAFETY INSTRUCTIONS AND COMPLIANCE DECLARATIONS

PLEASE OBSERVE THE FOLLOWING SAFETY
PRECAUTIONS

SURGE PROTECTION DEVICE RECOMMENDED

This product contains sensitive electrical components that may be damaged by electrical spikes, surges, electric shock, lightning strikes, etc. Use of surge protection systems is highly recommended in order to protect and extend the life of your equipment.

TABLE OF CONTENTS

1.0	PRODUCT DESCRIPTION	5
2.0	OPERATION CONTROLS AND FUNCTIONS	6
2.1	FRONT PANEL	6
2.2	REAR PANEL	7
3.0	MAINTENANCE AND TROUBLESHOOTING	8
3.1	MAINTENANCE	8
3.2	TROUBLESHOOTING	8
4.0	SPECIFICATIONS	9
5.0	SERVICE PROCEDURE	10
5.1	REPLACEMENT POLICY	10
5.2	RETURN AND REPAIR SERVICE	10
6.0	LIMITED WARRANTY	11
7.0	APPENDIX A	12

1.0 PRODUCT DESCRIPTION

The LBC-HDBT-R-DG Receiver can receive uncompressed audio/video and IP data over a single run of CAT5e/6/7 cable up to distances of 100m. It has the added benefit of a bi-directional LAN connectivity, allowing devices such as a Smart TV or games consoles to share an Internet connection. The unit can be powered by PoH (Power over HDBT) from a compatible transmitter, allowing for greater flexibility in installations.

Features

- HDMI with 3D, 4Kx2K support, HDCP and DVI compliant
- Simultaneous transmission of uncompressed data over a single CAT5e/6/7 cable up to 100m/328ft
- Uncompressed video support up to 1080p@60 Hz/12-bit
- High definition audio support up to LPCM 7.1CH, Dolby TrueHD, Dolby Digital Plus and DTS-HD Master Audio
- Supports HDCP repeater and CEC function
- Installation friendly

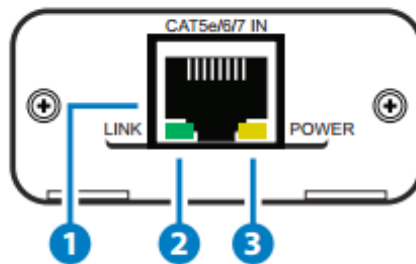
NOTE: The PoH function is designed for use with compatible Transmitter units only. Transmitters from other brands may not be compatible.

Package Contents

- 1xHDMI over Single CAT5e/6/7 with LAN/PoH Receiver
- Operation Manual

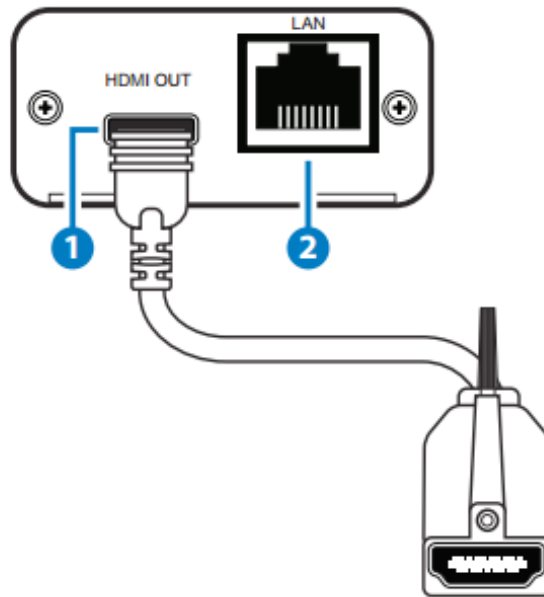
2.0 OPERATION CONTROLS AND FUNCTIONS

2.1 Front Panel



- 1. CAT5e/6/7 IN:**
Connect to the transmitter unit with a Single CAT5e/6/7 cable for transmission of all data signals over HDBaseT.
- 2. LINK LED:**
The yellow LED will illuminate when both the input and output signals are connected through the Category cable.
- 3. POWER LED:**
The green LED will blink when the device is receiving a power from the transmitter.

2.2 Receiver Front and Rear Panels



1. HDMI OUT:

Connect to a HDMI equipped TV/monitor for display of the HDMI input source signal.

2. LAN:

The LAN connection can be used to share a network or internet connection to a PC/Laptop or Smart TV that is connected to the receiver or can be connected to a network link to provide network/internet service to the transmitter (LAN equipped transmitters only).

3.0 MAINTENANCE AND TROUBLESHOOTING

3.1 Maintenance

There is no operator maintenance other than keeping the units clean. However, observe the following light indicators to make sure that the unit is working properly:

3.2 Troubleshooting

If the LBC-HDBT-R-DG units do not operate properly after installation, check for possible cable breaks, loose connections, and incorrect cable connections. If problems persist that may be fiber related, contact BCI at 1-800-214-0222 for further assistance.

For electrical problems, perform the following troubleshooting procedures:

1. **If the POWER indicator is ON, but the Link indicator is OFF, check for the following:**
 - a. Make sure the appropriate cables are being used.
 - b. Cable and cable connectors are not broken.
 - c. For each unit, the transmit (TX) cable is connected to the other unit's receiver (RX).
2. **If the POWER indicator and Link indicator are ON, but the channels are not operating, then:**
 - a. Check to see that the attached user equipment is turned on.
 - b. Both ends of the link are connected to the corresponding equipment and to the same corresponding channel port.
 - c. Cable connections at both channels are securely fastened to each connector. Turn the power off, then back on to reset the link.

4.0 SPECIFICATIONS

Video Bandwidth	340MHz/10.2Gbps
Ethernet Speed	100 Mbps
Input Port	1×CAT5e/6/7
Output Port	1×HDMI, 1×LAN (RJ45)
CAT5e/6/7 Output Cable	Up to 100 Meters
Supports Resolutions	480i~1080p@50/60, 1080p@24, 4K2K & VGA~WUXGA
Dimensions	50mm (W)×130mm (D)×23mm (H)
Operating Temperature	0 °C~40 °C / 32 °F~104 °F
Relative Humidity	20 ~ 90 % RH (non-condensing)
Power Consumption	12.1W

5.0 SERVICE PROCEDURE

5.1 Replacement Policy

Standard products found defective on arrival (DOA) will be replaced, based on availability, within 24 to 48 hours anywhere in the U.S. Please call Customer Service at **800-214-0222** for information.

5.2 Return/Repair Service

The LBC-HDBT System contains no user serviceable components. If you have a problem with your unit, please contact the Customer Service Department. To facilitate our return/repair processing please contact Broadata Communications, Inc. to obtain a Return Material Authorization (RMA). Please include the following information:

- Product model number
- Serial Number
- Complete description of problem
- Hardware installation description

Broadata Communications, Inc.
2545 West 237th Street, Suite K
Torrance, CA 90505
1-800-214-0222
(310) 530-1416
(310) 530-5958 (Facsimile)
e-mail: CustomerService@Broadatacom.com
Website: www.broadatacom.com

6.0 LIMITED WARRANTY

Broaddata Communications, Inc. (BCI) warrants, for a period of one year from date of shipment, each product sold shall be free from defects in material and workmanship. BCI will correct, either by repair, or at BCI's election, by replacement, any said products that in our sole discretion prove to be defective and are returned to the manufacturing location within 30 days after such defect is ascertained. All warranties are limited to defects arising under normal use and do not include malfunctions or failure resulting from misuse, abuse, neglect, alterations, electrical power problems, usage not in accordance with product instructions, improper installation, or damage determined by BCI to have been caused by the Buyer or repair made by a third party. Limited warranties granted on products are to the initial customer end-user and are not transferable. OUR LIABILITY UNDER THIS WARRANTY SHALL IN ANY CASE BE LIMITED TO THE INVOICE VALUE OF THE PRODUCT SOLD AND BCI SHALL NOT BE LIABLE TO ANYONE FOR CONSEQUENTIAL OR INCIDENTAL DAMAGES ARISING FROM THE USE OF ITS PRODUCTS OR THE SALE THEREOF. We make NO WARRANTY AS TO THE MERCHANTABILITY OF ANY GOODS, OR THAT THEY ARE FIT FOR ANY PARTICULAR PURPOSE OR END APPLICATION NOR DO WE MAKE ANY WARRANTY, EXPRESSED OR IMPLIED OTHER THAN AS STATED ABOVE.

7.0 APPENDIX A: CAT-5E/6/7 CABLE SPECIFICATION

CABLE TYPE	RANGE	PIXEL CLOCK RATE	VIDEO DATA RATE	SUPPORTED VIDEO
CAT5e/6/7	100 m	≤225 MHz	≤5.3 Gbps (HD Video)	Up to 1080p, 60 Hz, 36 bits, 3D (data rates lower than 5.3 Gbps or below 225MHz TMDs clock)
	70 m	>225 MHz	> 5.3 Gbps (Ultra HD Video)	4Kx2K, 30Hz video formats

Broadata Communications, Inc.
2545 West 237th Street, Suite K
Torrance, CA 90505
1-800-214-0222
(310) 530-1416
(310) 530-5958 (Facsimile)
e-mail: CustomerService@Broadacom.com
Website: www.broadacom.com



60000-LBC-HDBT-R-DG