



LBS-41H2, LBS-42H2, LBS-44H2

Link Bridge™ 4x1, 4x2, 4x4 HDMI 2.0 Switcher

Application Diagram



SWITCHER

Array Size	4x1 (LBS-41H2) or 4x2 (LBS-42H2) or 4x4 (LBS-44H2)
Input	Four (4) HDMI 2.0 ports
Output	One (1) or Two (2) or Four (4) HDMI 2.0 ports
Control	LAN, RJ45 RS-232 (1), DB-9 IR
Service	USB, for firmware upgrade

PHYSICAL

Dimension (W x D x H)	9.45" x 4.10" x 1.70" (for LBS-41H2 & LBS-42H2) 17.2" x 6.30" x 1.73" (for LBS-44H2)
Operating Temperature	0°C to 40°C
Storage Temperature	-20°C to 60°C
Power Supply	5V@2.6A (for LBS-41H2 & LBS-42H2) 24V@2.7A (for LBS-44H2)

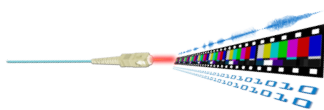
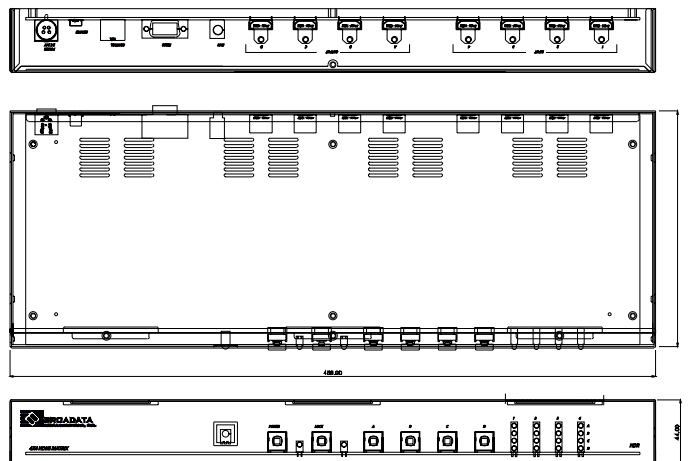
ORDERING INFORMATION

LBS-41H2	4x1 HDMI 2.0 Switcher
LBS-42H2	4x2 HDMI 2.0 Switcher
LBS-44H2	4x4 HDMI 2.0 Switcher

FEATURES

- An 4x1 (LBS-41H2) or 4x2 (LBS-42H2) or 4x4 (LBS-44H2) HDMI 2.0 switcher with HDCP 2.2 compliance
- Supports video resolutions up to 3840×2160@60Hz & 4096×2160@60Hz with 4:4:4 YUV and HDR format
- Supports pass-through of audio formats including LPCM 2.0–7.1, Dolby Digital, DTS, Dolby Digital Plus, Dolby TrueHD, Dolby Atmos and DTS-HD Master Audio
- Supports configurable EDID management via pre-defined internal EDIDs and user-defined EDID selections
- Multiple control interfaces including RS-232, Telnet, WebGUI and IR remote

PANEL DRAWINGS



DOING MORE WITH ONE CABLE

